

# How does Washington measure Growth?



## Student Growth Percentiles (SGPs)

### Percentiles

A student in the 65th percentile performs higher than 65% of students in the same grade with similar prior test scores

### "Normative" Growth

Comparing growth of students across the state with similar test scores

### Testing in Back-to-Back Years

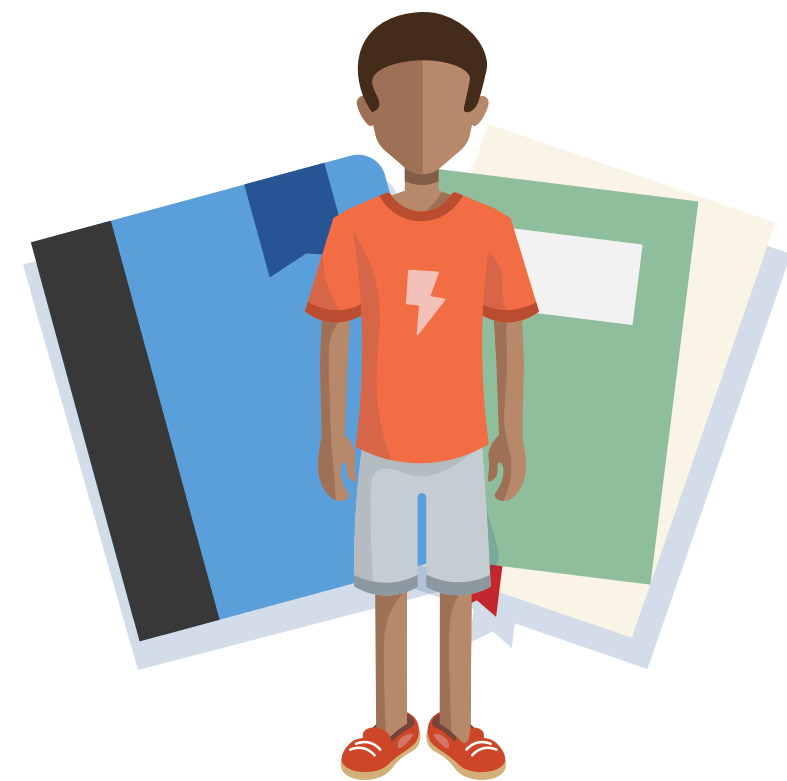
SGPs requires two test scores to determine how a student grew relative to their academic peers

### 2016 3rd Grade

Anthony scores a **2312**, classified as *Level 1*, on Math Smarter Balanced Assessment



Anthony and his classmates continue to learn



### 2017 4th Grade

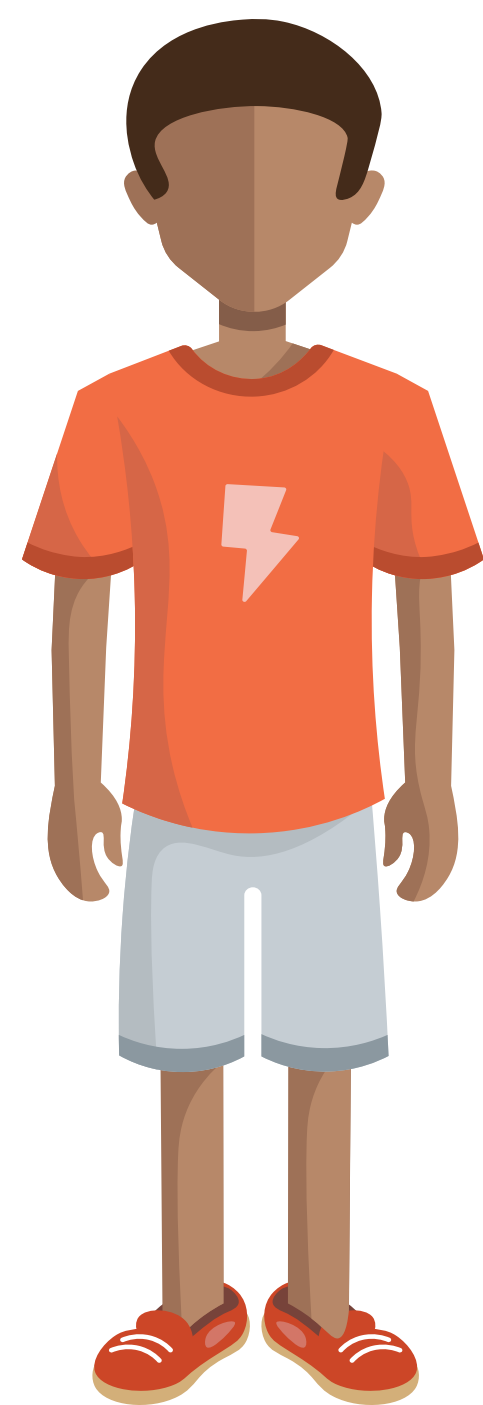
Anthony scores a **2404**, also classified as *Level 1*, on Math Smarter Balanced Assessment



Anthony grew by 92 points, but how does that compare to other similar students?

### Normative Growth

In comparison to other students in the state that scored around 2312 in 2016, Anthony scored **higher** than 80% of them



Anthony receives a math student growth percentile of **80**

### School Wide Growth

Anthony's SGP is lined up with all other student SGPs to show growth for his school



- 3
  - 22
  - 36
  - 38
  - 44** ←
  - 45
  - 71
  - 80
  - 93
- All SGPs are ranked lowest to highest
- The middle SGP, or median, is used to represent school wide growth

Anthony's school would have a median student growth percentile (MSGP) of **44**

