

Project AWARE

Advancing Wellness and Resiliency in Education

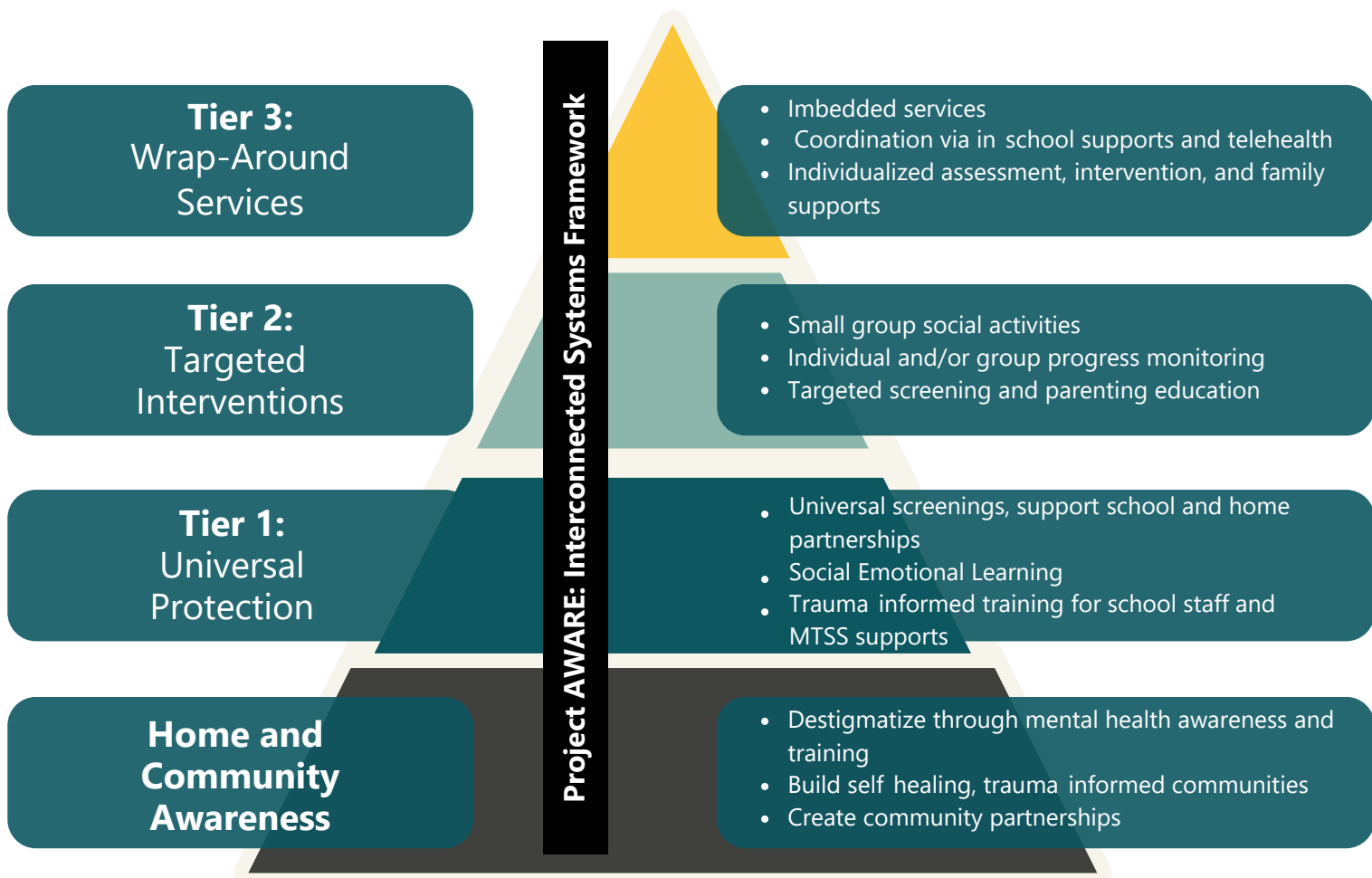


Washington Office of Superintendent of
PUBLIC INSTRUCTION

Overview

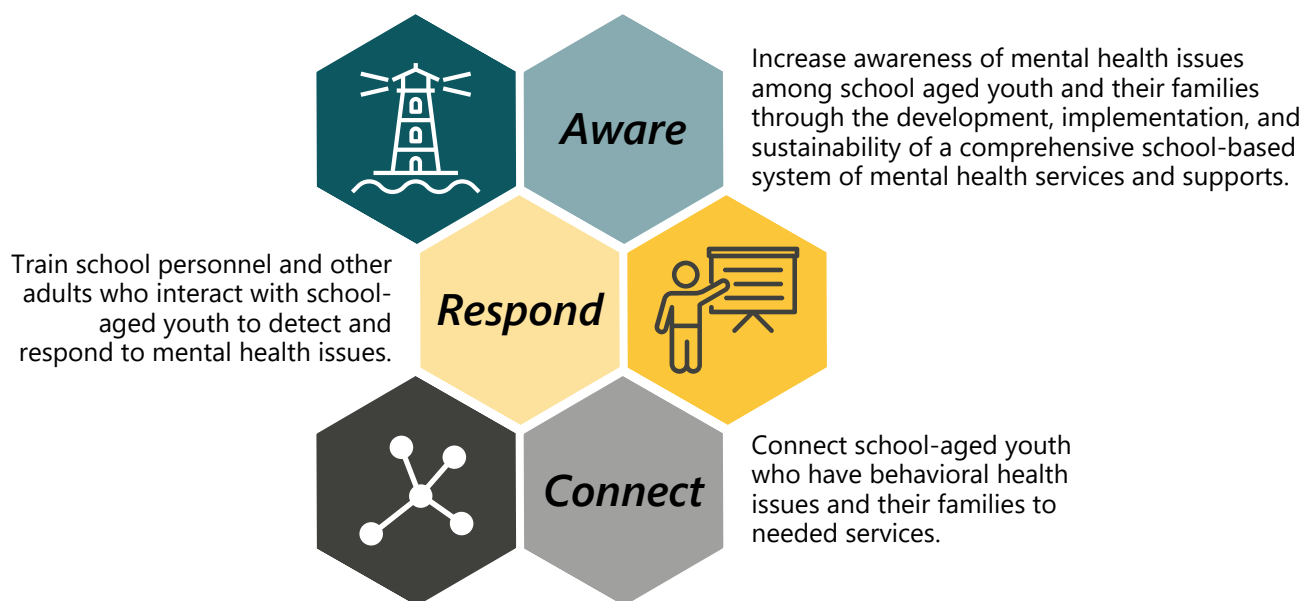
Project AWARE aims to build a comprehensive, coordinated and integrated school behavioral health services system.

Project AWARE is a grant from the Substance Abuse and Mental Health Services Administration (SAMHSA) to build infrastructure and expand the capacity of the state and district partners around mental health. To support communities and schools to increase access to school and community based mental health services, Project AWARE increases collaboration between state, local and building-level stakeholders to increase coordination of state and local policy, improve systems integration, strengthen cross-organizational resources and ensure sustainability of programs and funding. The model is based on a Multi-Tiered System of Supports (MTSS) behavioral health framework. All stakeholders follow the interconnected systems framework model to reach project goals.



Goals

- Increasing literacy and awareness of behavioral health issues among school-aged youth
- Promoting social and emotional learning
- Connecting children, youth, and families who may have behavioral health issues with appropriate services
- Improving school climate
- Promoting positive mental health among youth and families through social and emotional learning
- Building the capacity and leadership to sustain community-based mental health promotion, prevention, early identification and treatment services
- Providing training for school personnel and other adults who interact with school-aged youth to detect and respond to mental health issues in children and young adults



Key Players



Project AWARE 2020-2025 has partnered with three local education agencies (LEAs) to build district infrastructure and support best practices. They are:

- Sunnyside School District
- Wahluke School District
- Yakima School District

Additionally, Project AWARE 2022-2026 has partnered with two Educational Service Districts (ESDs) and one LEA. They are:

- ESD 105
- ESD 112
- Spokane Public Schools

OSPI is also in partnership with Project AWARE grants through Seattle Public Schools, ESD 101, ESD 105 and Battle Ground School District.