

Small LEA Support Team (SLST)

Virtual Statewide Network Meeting

August 21, 2024

Jason Miller

Dr. Yesenia Rodriguez

Tony May

Ellen Hopkins

Executive Director, Elementary, Early Learning, and Federal Programs

Assistant Director, Federal Programs

Rural Education Program Supervisor

Program Supervisor Title I, Part A



Vision

All students prepared for post-secondary pathways, careers, and civic engagement.

Mission

Transform K–12 education to a system that is centered on closing opportunity gaps and is characterized by high expectations for all students and educators. We achieve this by developing equity-based policies and supports that empower educators, families, and communities.

Values

- Ensuring Equity
- Collaboration and Service
- Achieving Excellence through Continuous Improvement
- Focus on the Whole Child



Washington Office of Superintendent of
PUBLIC INSTRUCTION

Equity Statement

Each student, family, and community possesses strengths and cultural knowledge that benefits their peers, educators, and schools.

Ensuring educational equity:

- Goes beyond equality; it requires education leaders to examine the ways current policies and practices result in disparate outcomes for our students of color, students living in poverty, students receiving special education and English Learner services, students who identify as LGBTQ+, and highly mobile student populations.
- Requires education leaders to develop an understanding of historical contexts; engage students, families, and community representatives as partners in decision-making; and actively dismantle systemic barriers, replacing them with policies and practices that ensure all students have access to the instruction and support they need to succeed in our schools.



Washington Office of Superintendent of
PUBLIC INSTRUCTION

Tribal Land Acknowledgement

I would like to acknowledge the Indigenous people who have stewarded this land since time immemorial and who still inhabit the area today, the Steh-Chass Band of Indigenous people of the Squaxin Island Tribe.



AGENDA



**Neah Bay
High School**

[Cape Flattery SD 401](https://www.cfsd401.org)
[cfsd401.org](https://www.cfsd401.org)



Washington Office of Superintendent of
PUBLIC INSTRUCTION

- 10:30
- Vision, Mission, Values, Equity Statement
- Tribal Land Acknowledgement
- 10:40
- Program Review and Support
- Upcoming SLST Events/Dates
- 11:30 – 11:40 BREAK
- 11:40 OPTIONAL
- Collegial Conversations and Networking
- 12:00

A photograph of three women sitting at a table in a meeting. The woman on the right is speaking and gesturing with her hands. The woman in the middle is listening and smiling. The woman on the left is also listening. The background shows a modern office setting with shelves and a window.

WELCOME

Dr. Yesenia Rodriguez

Assistant Director, Federal Programs

Office of Superintendent of Public Instruction

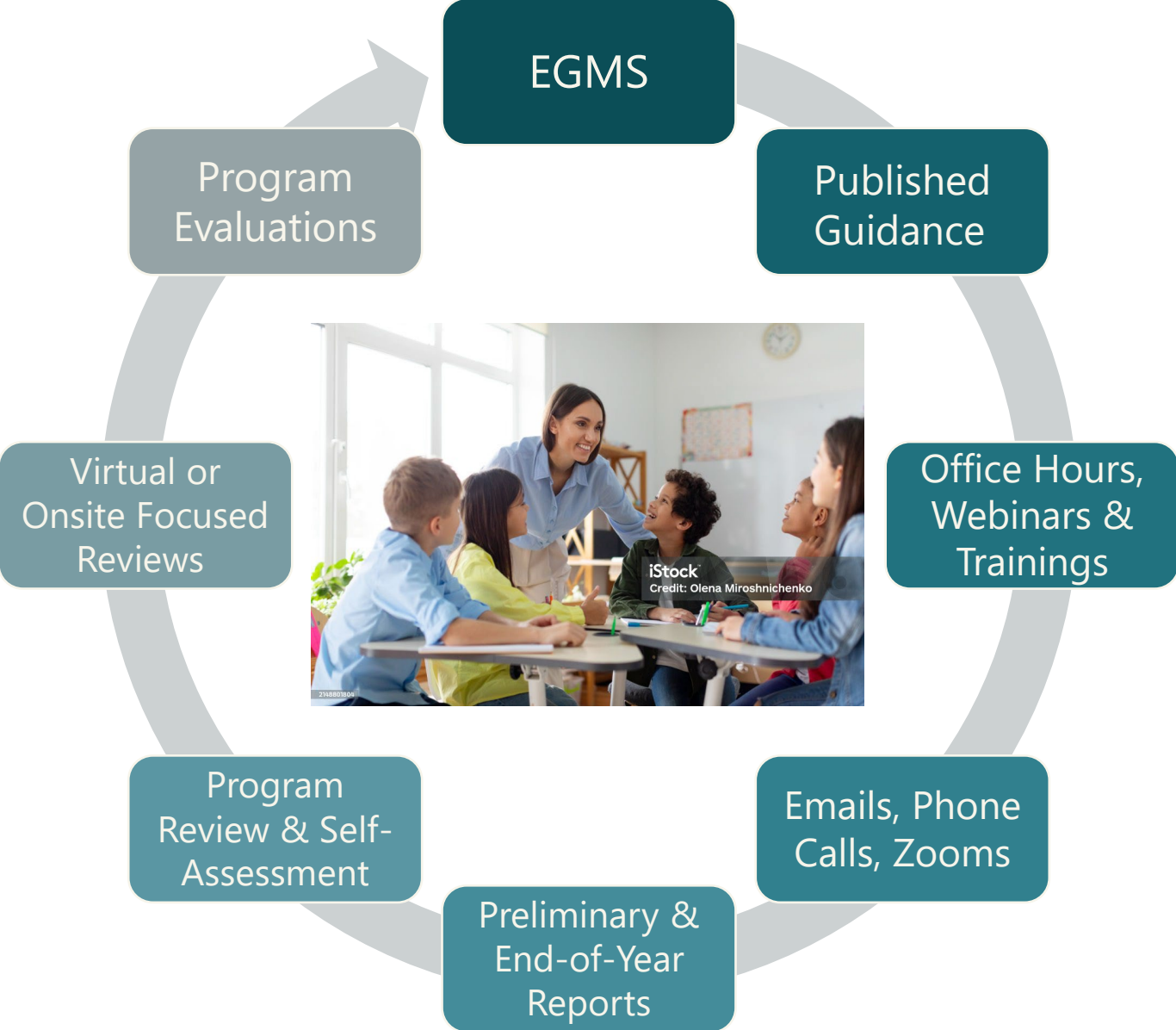
Elementary, Early Learning, and Federal Programs (EELFP)

Office of Superintendent of Public Instruction

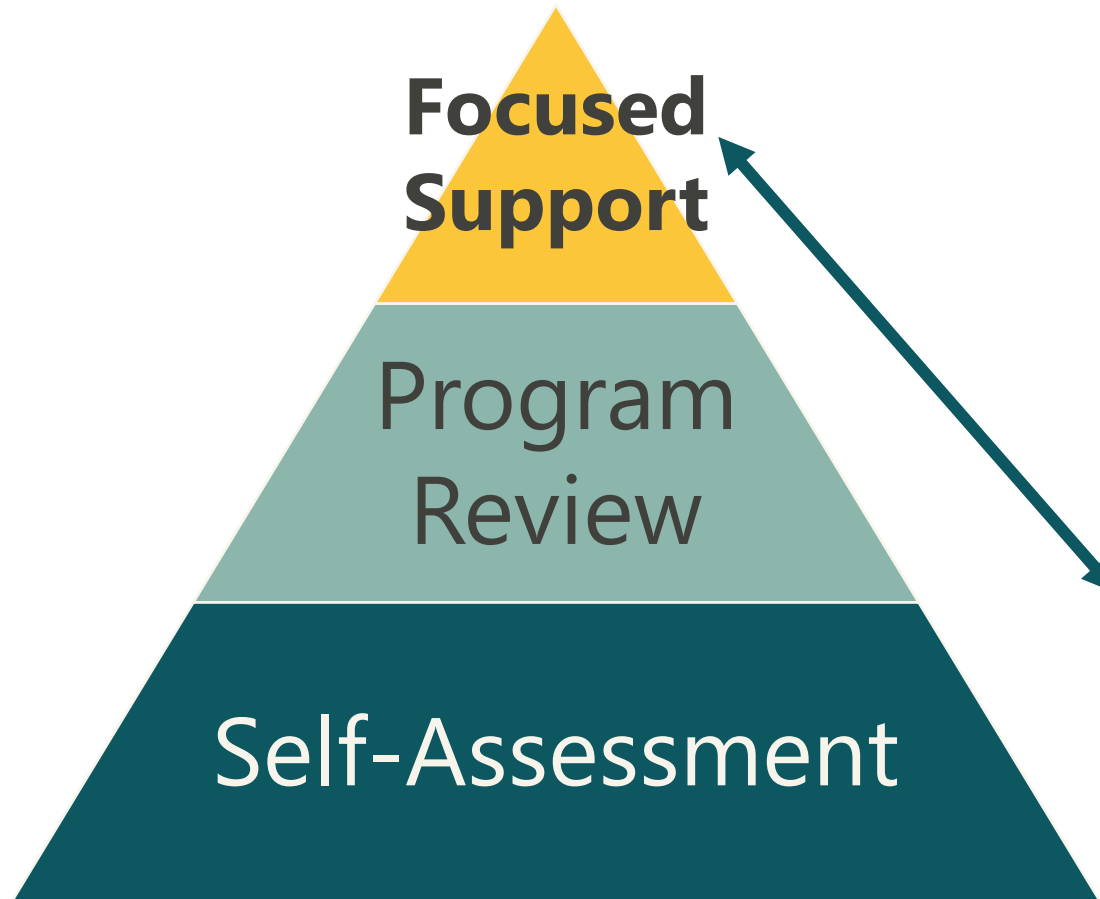
Program Review & Support Process



Continuum of Oversight



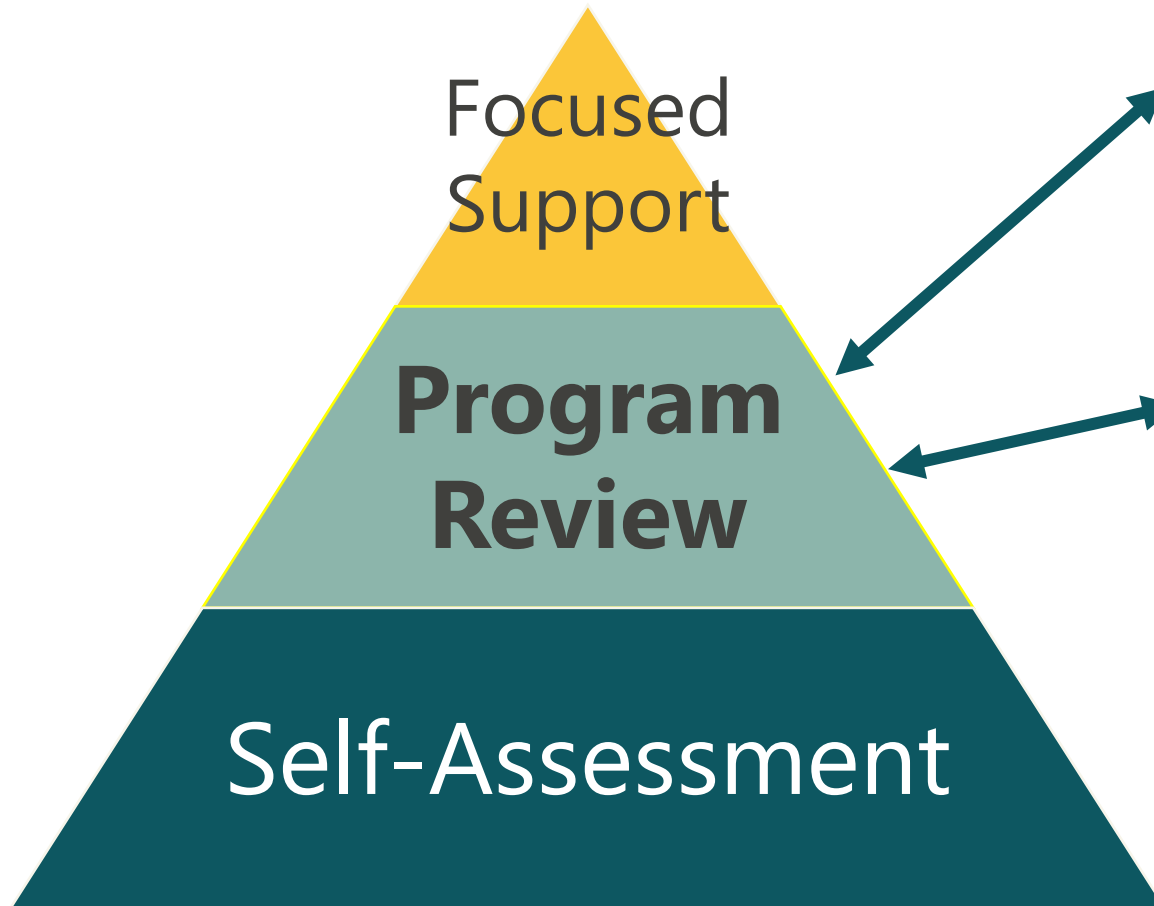
Focused Support



- **Self-Assessment**
 - A universal review of self-reported items
- **Program Review**
 - **No more than 45** LEAs selected based on the annual Program Support Assessment
- **Focused Support**
 - Programs may need to provide additional supports to a particular LEA. Virtual or On-site



New! Program Review



Full Review

- **LEAs with 1000+ total student enrollment**
 - 20 LEAs with the highest risk score

Limited Review

- **LEAs with 1-999 total student enrollment**
 - 25 LEAs with the highest risk score
 - Review no more than 3 programs (and possible reduced checklists)

Total 45 LEAs selected



Self-Assessment



Self-Assessment Pilot

- 14 LEAs & 1 Tribal Compact were selected to pilot



2024-25 Programs Included in Program Review

1. Title I, A
2. Title I, C – Migrant Ed
3. Title I, D – Neglected and Delinquent
4. Title II, A – Teacher and Principal Quality
5. Title III / TBIP (Transitional Bilingual Instructional Program)
6. Title V, B – Rural Education

10. Title IX – McKinney-Vento (Homeless)
12. Perkins / CTE
13. Private Schools (Equitable Services)
14. Civil Rights*
15. Fiscal
16. Office of System and School Improvement
17. Foster Care
18. Title IV, A – Student Support and Academic Enrichment
19. Tribal Consultation

*Excluded this year.



Risk Assessment

Program Checklist Item Rubric

This rubric was used to determine a risk level for each items on every program checklist.

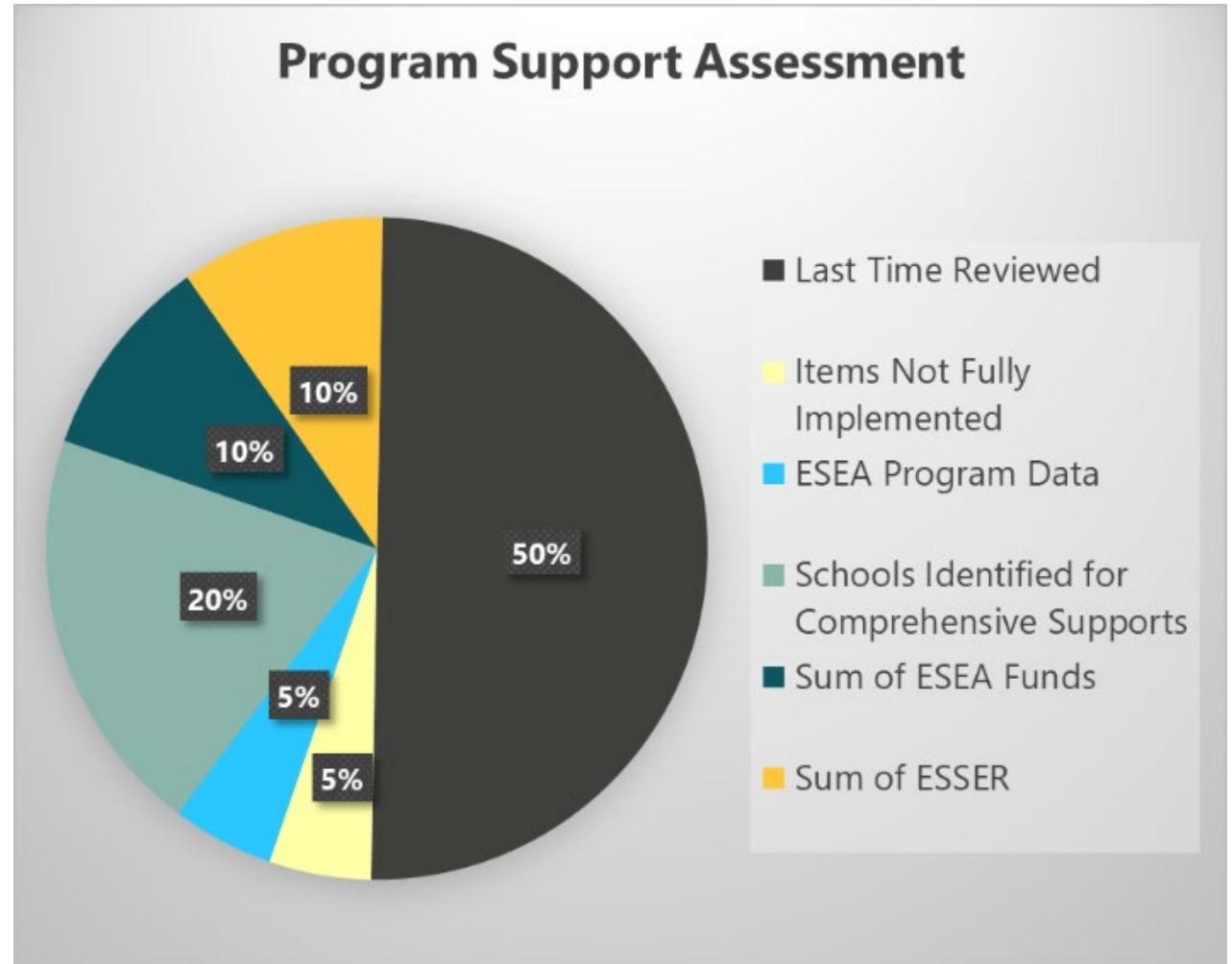
	1	2	3	4
Risk Level Determinations	<p>Low risk: (<i>one</i> of the following applies)</p> <ul style="list-style-type: none"> • has direct impact on student educational outcomes • directly impacts equity, or educational opportunities • potential for Civil Rights legal action • can result in audit recovery of federal funds 	<p>Moderate risk: (<i>two</i> of the following apply)</p> <ul style="list-style-type: none"> • has direct impact on student educational outcomes • directly impacts equity, or educational opportunities • potential for Civil Rights legal action • can result in audit recovery of federal funds 	<p>High risk: (<i>three</i> of the following apply)</p> <ul style="list-style-type: none"> • has direct impact on student educational outcomes • directly impacts equity, or educational opportunities • potential for Civil Rights legal action • can result in audit recovery of federal funds 	<p>Highest risk: (<i>four</i> of the following apply)</p> <ul style="list-style-type: none"> • has direct impact on student educational outcomes • directly impacts equity, or educational opportunities • potential for Civil Rights legal action • can result in audit recovery of federal funds



Annual Risk Assessment

The annual Program Support Assessment is based on the following available data and weighted in the following order:

1. Last time the LEA participated in Program Review
2. Items not fully implemented in previous Program Review
3. ESEA Program Data
 - I. State Audit Finding
 - II. Multi-Lingual Data
4. Schools Identified for Comprehensive Supports
5. Sum of ESEA Funds
6. Sum of ESSER Funds



LEAs Selected for Program Review 2024-25

LEAs Receiving Full Reviews

1. Bainbridge Island School District
2. Camas School District
3. Cascade School District
4. Castle Rock School District
5. Dieringer School District
6. Elma School District
7. Hockinson School District
8. Kalama School District
9. La Center School District
10. Mercer Island School District
11. Montesano School District
12. Ocean Beach School District
13. Olympia School District
14. Rochester School District
15. Selah School District
16. Tenino School District

17. Tumwater School District
18. Washougal School District
19. West Valley School District (Yakima)
20. Zillah School District

Small LEA Reviews (Limited Reviews)

21. Washtucna School District
22. Manson School District
23. ~~Waterville School District~~
24. Coulee-Hartline School District
25. Bickleton School District
26. Carbonado School District
27. Green Mountain School District
28. Klickitat School District
29. Mossyrock School District
30. Pateros School District
31. Pe Ell School District

32. Skamania School District
33. Southside School District
34. ~~Stehekin School District~~
35. White Pass School District
36. Willapa School District
37. Wishkah Valley School District

ESDs

38. ESD 112 acting as a school district (Title I, Part D only)
39. ESD 113 acting as a school district (Title I, Part D only)

Charter Schools

40. Impact | Black River Elementary
41. Impact | Commencement Bay Elementary
42. Pinnacles Prep Charter School
43. Rooted Charter School
44. Whatcom Intergenerational High School
45. Why Not You Academy



Q & A



Contact:

Dr. Yesenia Rodriguez, Assistant Director, Federal Program
Elementary, Early Learning, Federal Programs

yesenia.rodriguez@k12.wa.us

C: 509-840-9119





SLST Where We've Been
SLST Where Are We Going

The Beginning 2022–23



- Survey sent to small LEA leaders
- SLST Advisory Committee formed
- Multiple SLST Advisory Committee meetings
- ESD rollout presentations

Actions 2023–24



- Simplified Consolidated Grant Application (CGA) for select REAP eligible LEAs
- Ongoing SLST Advisory Committee meetings
- SLST Webpage
[Small LEA Support Team \(SLST\) \(ospi.k12.wa.us\)](https://ospi.k12.wa.us)
- 5 scheduled SLST Statewide Virtual Network Meetings
- Beginning work on a coordinated federal grants calendar

SLST STATEWIDE VIRTUAL NETWORK MEETINGS

Purpose:

To provide small LEA leaders with timely information

Respond to LEA leader suggestions for content

Provide space for collegial conversation around problems of practice

➤ **Date: August 9, 2023**

- Dr. Jon Mishra
- Logan Morrow

Time: 10:00 – 12:00

Assistant Superintendent (EELFP)

Community Prevention Project Coordinator



➤ **Date: October 11, 2023**

- Rebecca Estock

Time: 10:00 – 12:00

MTSS & WA Literacy PL



➤ **Date: December 13, 2023**

- Kasha Roseta

Time: 10:00 – 12:00

Civil Rights



Date: February 14, 2024

- TBD

Time: 10:00 – 12:00

~~Washington Integrated Student~~

~~Supports Protocol (WISSP)~~

Legislative Update



➤ **Date: April 10, 2024**

- Armondo Isais-Garcia

Time: 10:00 – 12:00

Migrant



This year 2024-25



- Ongoing SLST Advisory Committee meetings
- SLST Webpage
[Small LEA Support Team \(SLST\) \(ospi.k12.wa.us\)](https://ospi.k12.wa.us)
- 5 scheduled SLST Statewide Virtual Network Meetings
- Coordinated federal grants calendar
- In-person meeting November 7
- Launch job-alike virtual support for small LEA staff

SLST STATEWIDE VIRTUAL NETWORK MEETINGS

Purpose:

To provide small LEA leaders with timely information

Respond to LEA leader suggestions for content

Provide space for collegial conversation around problems of practice

➤ **Date: August 21, 2024**

Time: 10:30 – 12:00

• Program Review and Support for Small LEAs

<https://www.pdenroller.org/ospi/catalog/172727>

➤ **Date: October 16, 2024**

Time: 10:30 – 12:00

• Integrated Student Supports Protocol

<https://www.pdenroller.org/ospi/catalog/172729>

➤ **Date: December 18, 2024**

Time: 10:30 – 12:00

• TBD

<https://www.pdenroller.org/ospi/catalog/172732>

Date: February 19, 2025

Time: 10:30 – 12:00

• TBD

<https://www.pdenroller.org/ospi/catalog/172746>

➤ **Date: April 16, 2025**

Time: 10:30 – 12:00

• TBD

<https://www.pdenroller.org/ospi/catalog/172748>

[Event Catalog \(pdenroller.org\)](https://www.pdenroller.org)



Washington Office of Superintendent of
PUBLIC INSTRUCTION



SLST Updates & Opportunities

SLST Updates & Opportunities

- SLST Office Hours | 2nd and 4th Wednesday of every month | 10 am–11 am | [Zoom Link](https://us02web.zoom.us/j/83008413729)
(<https://us02web.zoom.us/j/83008413729>)
 - Note – This is a change from the previous school year
- CGA has launched and is ready to complete
- EGMS Office Hours
 - Tuesdays from 10:00-11:00 am
(Zoom Link: <https://us02web.zoom.us/j/88033044818>)
 - Thursdays from 1:00-2:00 pm
(Zoom Link: <https://us02web.zoom.us/j/82230019925>)



Expanding the Advisory Committee

Current Members	Organization	Region
Effie Dean	Nespelem School District	ESD 171
Jim Kowalkowski	Rural Education Center	
Kevin Jacka	The Rural Alliance	
Mark Pickel	Starbuck	ESD 123
Scott Mauk	Chimacum School District	ESD 114
Scottie Wiltse	Pateros School District	ESD 171

Regions Not Represented:

ESD 101 ESD 105
ESD 112 ESD 113
ESD 121 Puget Sound? ESD 189

THANK YOU

The image features the words "THANK YOU" in a playful, hand-drawn style. Each letter is a different color and is suspended from a thin, vertical string of the same color. The letters are arranged in two groups: "THANK" on the left and "YOU" on the right. The "T" is teal, "H" is light green, "A" is orange, "N" is red, and "K" is dark blue. The "Y" is yellow-orange, "O" is dark red, and "U" is green. The background is plain white.

SLST Contacts

Tony May *He/Him*

Rural Education Program Supervisor

c: 360-972-4047

Tony.May@k12.wa.us

Ellen Hopkins *She/Her*

Program Supervisor, Title I, Part A

c: 360-972-4785

Ellen.Hopkins@k12.wa.us

10 Minute Break





Washington Office of Superintendent of
PUBLIC INSTRUCTION

Connect with us!



k12.wa.us



facebook.com/waospi



twitter.com/waospi



youtube.com/waospi



medium.com/waospi



linkedin.com/company/waospi