

Graduation
Equity
Webinar
Series

Alternative Learning Options



Washington Office of Superintendent of
PUBLIC INSTRUCTION

Vision

All students prepared for post-secondary pathways, careers, and civic engagement.

Mission

Transform K–12 education to a system that is centered on closing opportunity gaps and is characterized by high expectations for all students and educators. We achieve this by developing equity-based policies and supports that empower educators, families, and communities.

Values

- Ensuring Equity
- Collaboration and Service
- Achieving Excellence through Continuous Improvement
- Focus on the Whole Child

Equity Statement

Each student, family, and community possesses strengths and cultural knowledge that benefits their peers, educators, and schools.



Washington Office of Superintendent of
PUBLIC INSTRUCTION

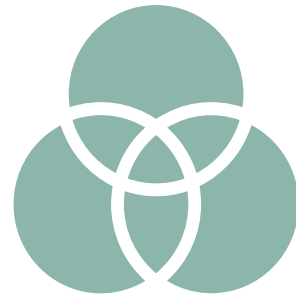
I am on Squaxin, Cowlitz, & Nisqually Land



Equity Pause – Why Are We Doing This?



Who will my decision affect?



What is my locus of control?



Which actions will have the largest impact?



What's a step I can take right away?



Objectives

- Get a **landscape** of what learning options are available through Washington schools
- Learn from program staff about a **variety of programs available**
- Learn from school practitioners **implementing** learning options
- Get **resources** to help you get started



Presenters



Jocelyn Núñez S.

Student Engagement
Program Supervisor

OSPI

jocelyn.nunez@k12.wa.us



Rhett Nelson

Director of Learning
Options

OSPI

rhett.nelson@k12.wa.us



Brad Sprague

Executive Director

Washington
Association for
Learning Alternatives

wala.execdir@gmail.com



Mandy Paradise

Associate Director of
Open Doors Youth
Reengagement

OSPI

mandy.paradise@k12.wa.us



Anissa Sharratt

Associate Director of
Learning Options &
ALE

OSPI

anissa.sharratt@k12.wa.us

We want to know about you!



Who's here?



What grade band do you work with the most?



How familiar are you with our topic?

Timing for Webinar Participation:



I would attend an **April** webinar



I would attend a **May** webinar



I would attend an **August** webinar

New To ALE: Teacher or Administrator

Helpful hints to being successful as a new
ale teacher or administrator





Brad Sprague

Executive Director

Washington Association for Learning
Alternatives

wala.execdir@gmail.com

Relationship Building

- Get rid of the word, “Alternative”! (school and community)
- Get to know your teaching and office staff
- Get to know your custodian! They have all the secrets!
- Get to know your classified staff. They are your life support!
- Get to know your students. Enrollment process is a great start.
- Get to know your district support staff (allies vs. adversaries)



Surround Yourself with Knowledge

Staff

- Those with experience in Alternative Learning Experiences (ALE)
- Those with program model experience
- Those who are in it for students as the target vs. themselves
(You decide how you are going to exert your effort)
- Office staff (registrar, office manager) who have experience with full time employment (FTE) or enrollment
- Counselors (outside support for students)

Call on WALA for Support

Executive Director

- Legislative updates
- Organizational opportunities
- Program design
- Ethical practices
- Best practices
- Use region representatives



Best Practices Based on Your Style

- Manage in the morning and late afternoon vs. during the day
- Be visible and supportive in classrooms
- Daily 5 x 5's - All classes
- Promote your program throughout your district (proactive vs. reactive)
- Be a good **listener**
- Be a good **communicator**
- Audit Notebook
- Quality high school & beyond planning and career planning for students. Meaningful! (Employability Profile)
- Be willing to **“spend the time” to make your program successful for kids, staff, parents, and community**





Do you have
any questions?

Add them to the **Q&A**
Upvote the questions you like



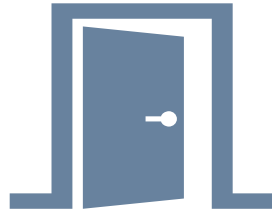
OSPI Supports

Learning Options



Alternative Learning Experiences (ALE)

- All ages
- Including **online learning**



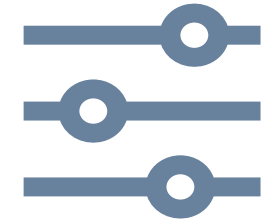
Open Doors

- Ages **16-21**
- Reengagement focused



Mastery-based Learning

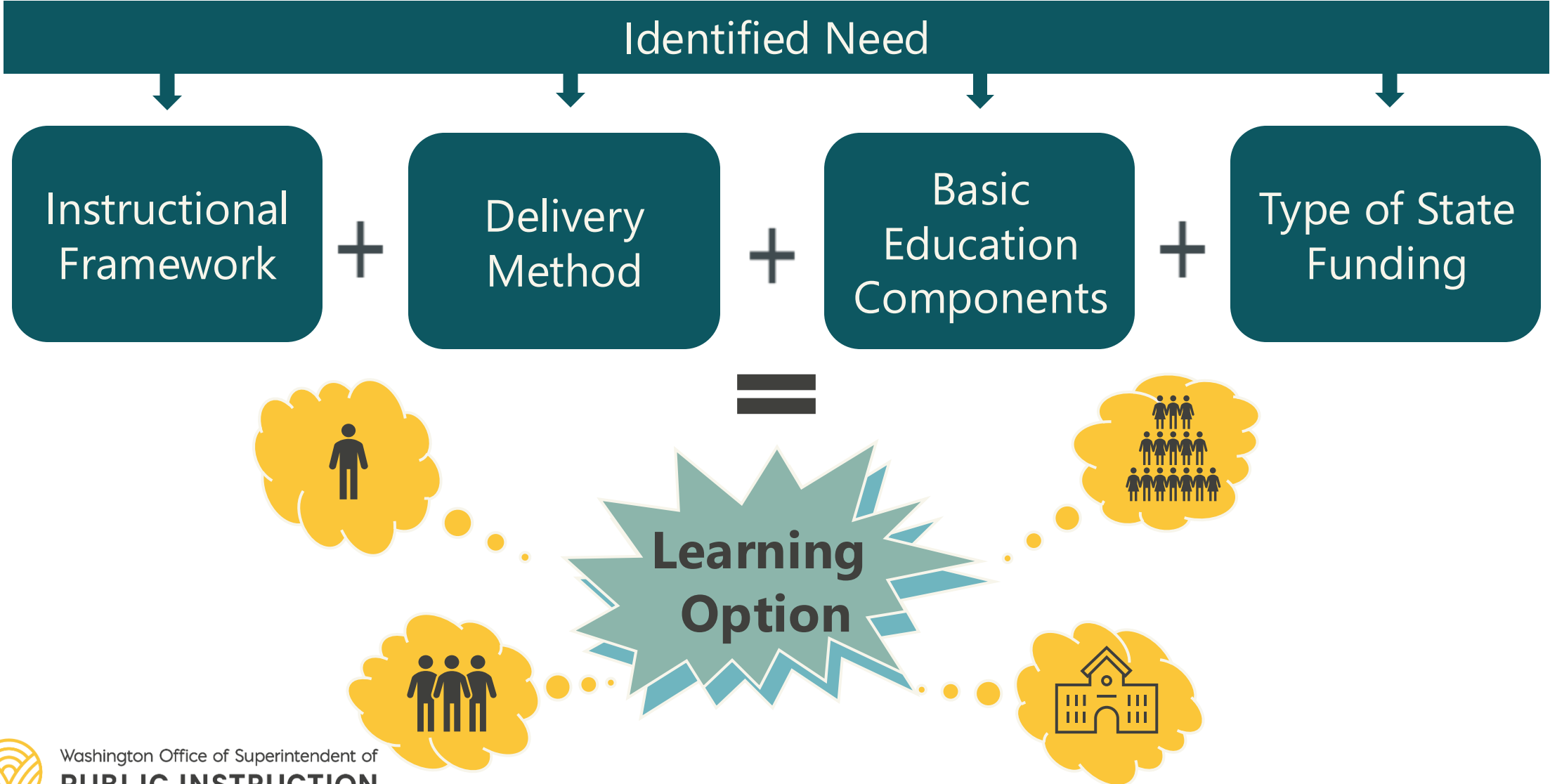
- All ages
- **Method** of instruction



Alternative Ed

- All ages
- **Variety** of delivery

Landscape of Learning Options



Basic Education and Learning Options

Truancy & Re-engagement	State Assessments	Graduation requirements	Instructional hours and days	Curriculum adopted per school board policy
Appropriately certificated and endorsed teachers	Special Education	Transitional Bilingual Instruction Program	CEDARS Reporting	Highly Capable
McKinney-Vento	John McCoy (Iulilaš) <i>Since Time Immemorial</i>	Counseling	High School and Beyond Plans	All other basic education regulations and requirements





What Does it Look
Like to Do This Work?

Mastery-based Learning & Open Doors



Curt Scheidel

Principal, Heights Campus
Vancouver School District
curt.scheidel@vansd.org



Kathleen Paradis

Associate Principal, Heights
Campus
Vancouver School District
kathleen.paradis@vansd.org

Tell us a bit about your programs and role

You have an extensive variety of Learning Options available at Heights Campus, what was it about **Mastery-Based Learning** that compelled you to moving in that direction, too?

When it comes to your **Open Doors program**, what is an ah-ha moment or lesson learned that you've experienced that stands out to you?

How do you determine if Open Doors or ALE is the best fit for a student? What things are considered?



Open Doors



Carol (Gift) Kelly

ABE Lab Instructor/Open Doors Coordinator, YVC
Step up to College Program
Stevenson & White Salmon

ckelly@yvcc.edu

Tell us a bit about your programs and role

You work in a very **rural environment**. Can you tell us a bit about what it looks like on the day-to-day for serving students and getting their needs and goal met?

What sort of things do your students need



Washington Office of Superintendent of
PUBLIC INSTRUCTION

Online Learning



Brooke Wertz

Coordinating Teacher for Online Learning
Bellingham School District

Brooke.Wertz@BellinghamSchools.org

Supports online learning in
Bellingham Public Schools as the
Teacher Coordinator

Supports the K-12 programming
through The Bellingham Family
Partnership Program and Bellingham
Virtual Learning



Alternative Learning Experience (ALE) & Alternative School



Mace Gratz

Principal, Seaview Academy & Lincoln High School

Port Angeles School District

MGratz@portangelesschools.org

Multi-district online provider for grades 3-12 with staff members all local to Port Angeles

Port Angeles School District's Online & ALE program for K-12 serving 400+ students

Weekly in person workshops for elementary age students to ensure fundamental academic and social skills are developed

Weekly in-person and online tutoring for additional support

Several hybrid options for fine arts and personal pathways (writer's workshop, calligraphy, music etc.)

Performance-Based Graduation Pathway





What advice would you give someone who wants to launch a learning option or who is advocating for learning options in their district?



Can you tell us a story of how your program impacted a particular student?

Mastery-based Learning Open Doors

Curt Scheidel

Principal

Heights Campus

Vancouver School District

Kathleen Paradis

Associate Principal

Heights Campus

Vancouver School

District

How do you determine if Open Doors or ALE is the best fit for a student?
What things are considered?





If you could share one thing about your experience implementing your programs, what is it that you hope people could know about?

Share What You Learned



- Discuss your ideas with leadership



- Share ideas with your Professional Learning Community



- Lead a discussion with students



Resources

Resources

Funding

- [Unlocking Federal & State Program Funds to Support Student Success](#)

Tools & Videos

- [Read & Subscribe](#) to the Engage Newsletter
- Engage Care Package

Websites

- [OSPI Open Doors](#)
- [OSPI Alternative Learning Options](#)
- [Mastery-based Learning Collaborative page](#)
- [Washington Association for Learning Alternatives](#)
- [YVCC Stepping Up to Success](#)

People

- [Connect with OSPI staff](#)



Learning Options Resources

- [Alternative Learning Experience Website](#)
 - Guide to Offering ALE
 - ALE 101 Canvas Course
 - Compliance Resources
- [Online Learning Website](#)
 - Guide to Online Learning
 - FAQ's
 - Approval Information
- [Open Doors Website](#)
 - Getting Started Toolkit
 - Compliance Resources
 - Difference between ALE and Open Doors

- Serving Students with Disabilities
 - [Guide](#)
 - [FAPE and LRE Self-Assessment Tool](#)
 - [ALE/Online Program Profile](#)
- Newsletters
 - [Open Doors](#)
 - [Learning Options](#)

Next Month

May 14

10:00 a.m. – 11:30 a.m.


Teacher Strategies for Mental Health in the Classroom



Evaluation



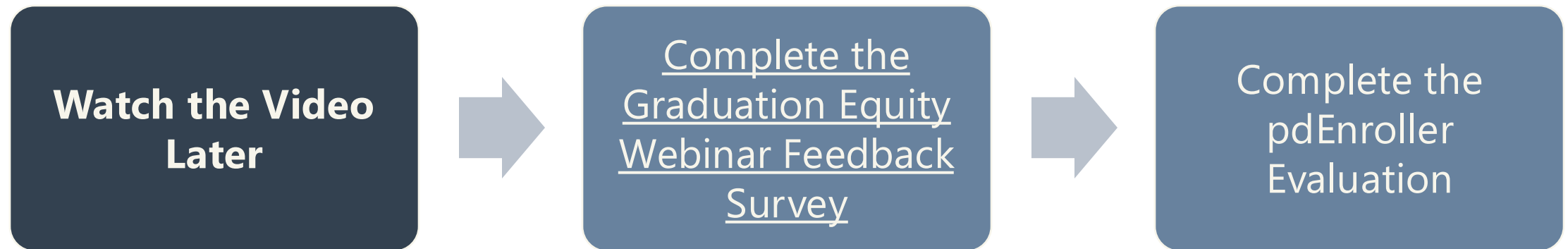
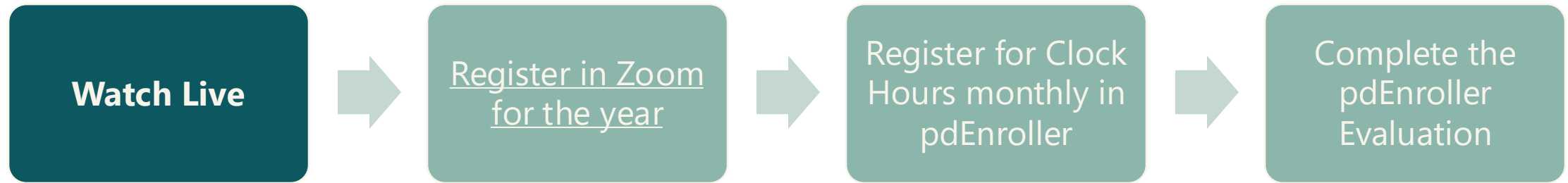
What
worked?



What could
we adjust?



Do You Need Free Equity Clock Hours?



Email Ronnie.Larson@k12.wa.us



Washington Office of Superintendent of
PUBLIC INSTRUCTION

Connect with us!



k12.wa.us



facebook.com/waospi



instagram.com/waospi



twitter.com/waospi



youtube.com/waospi



medium.com/waospi



linkedin.com/company/waospi