

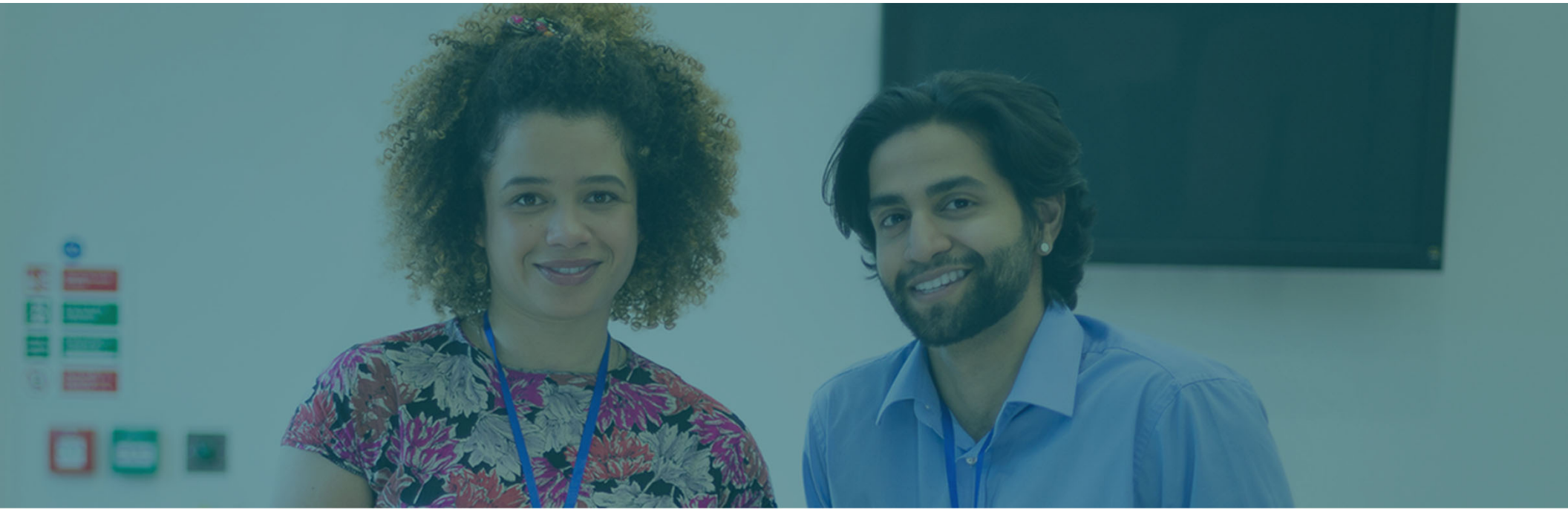
# CI Webinar Eight – Resource Inequities

Office of System and School Improvement

May 2025



Washington Office of Superintendent of  
**PUBLIC INSTRUCTION**



# CI Webinar Eight – Resource Inequities

# What is resource Inequity?

- Resource equity means using people, time, and money in thoughtful ways so all students can succeed, no matter their race or income.
- It's not about giving everyone the same thing, but giving each student what they need to learn and grow.
- This means helping students with greater needs and removing barriers tied to race, income, or where they live. Some schools are already doing this, proving that closing learning gaps is possible.

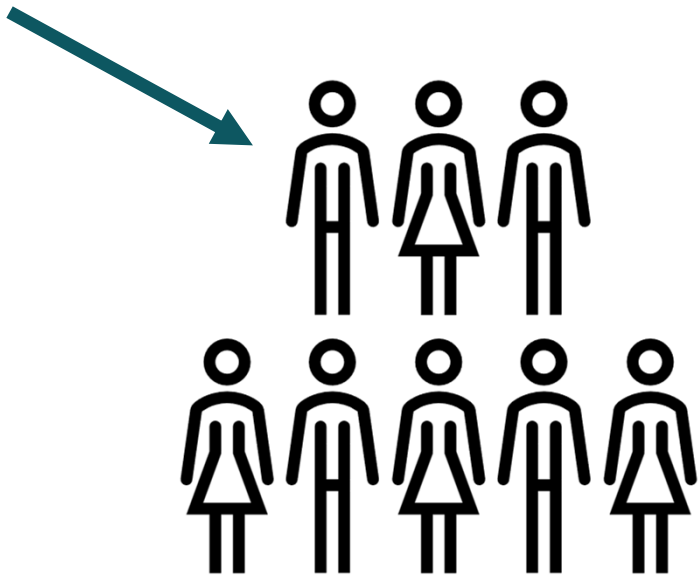


# Step 1: Gather and Analyze Foundational Data

- Understand the makeup of your students, teachers, and leaders.
- Identify which students might need extra support.



## Step 2: Examine Fiscal and Human Resources

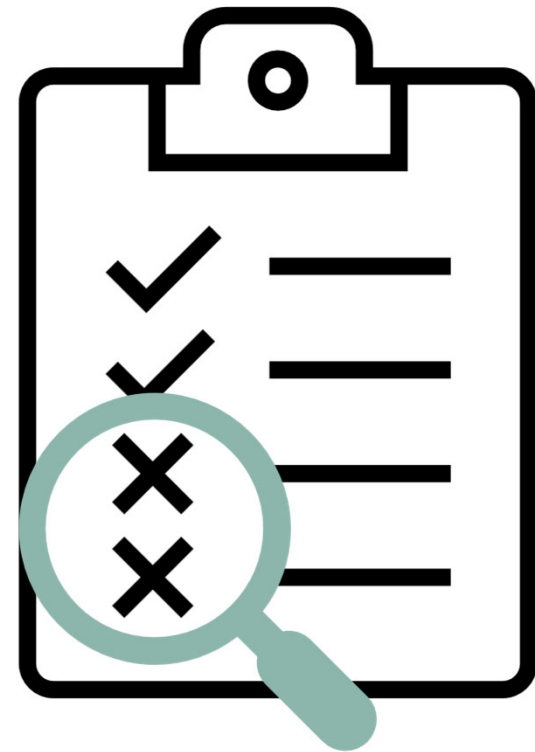


- Review how funding and staffing are spread across the school.
- Check if teachers and staff reflect student needs and diversity.



## Step 3: Evaluate Instructional Access and Opportunities (Part 1)

- Make sure all students get strong, grade-level materials.
- Ensure materials represent different cultures and languages.



## Step 3: Evaluate Instructional Access and Opportunities (Part 2)



- Review access to extra programs like arts, preschool, and technology.
- Check how well families are engaged and included.

# Step 4: Identify and Prioritize Resource Inequities

- Identify the biggest gaps in resources and opportunities.
- Focus on gaps that hurt low-income and minoritized students.

## Section 6: Examining Resource Inequities

SIPs and L-CAPs must identify resource inequities, which may include a review of LEA and school-level budgeting processes, assessed through implementation of the plan, as required by ESEA section 1111(d)(1)(B)(iv) and (2)(C). School districts must identify resource inequities by analyzing key data. This includes per-pupil expenditure, teacher qualifications, access to specialized instruction, and participation in rigorous coursework. All findings must guide efforts to eliminate disparities and improve learning opportunities.

### Resources to evaluate:

**Fiscal resources:** school and district budgeting; per-pupil expenditures from Federal, State, and local sources.

**Non-fiscal resources:** school leadership quality and diversity; teachers; teaching quality and diversity (i.e., rates at which "low-income students and minority students [are] taught by inexperienced or out-of-field teachers); staff; learning-ready facilities, access to and participation in comprehensive and rigorous coursework; instructional time and attention; access to specialized instructional support personnel; rates of access to and participation in preschool and full-day kindergarten programs for elementary school students; high quality early learning and early interventions; diverse and inclusive schools and classrooms; family academic engagement; community

## Section 4: Resource Inequities

Investigate resource inequities (funding, staffing, materials, resources, etc.) identified through conducting the Comprehensive Needs Assessment (CNA) and using the [Examining Resource Inequities Tool](#). Summarize what resource inequities were identified and which will be addressed in the school improvement plan.

Click or tap here to enter text.



Washington Office of Superintendent of  
**PUBLIC INSTRUCTION**



## Step 5: Plan, Act, and Monitor



- Create a plan to fix the gaps and measure success.
- Involve families and students in shaping the work.

# Final Thoughts

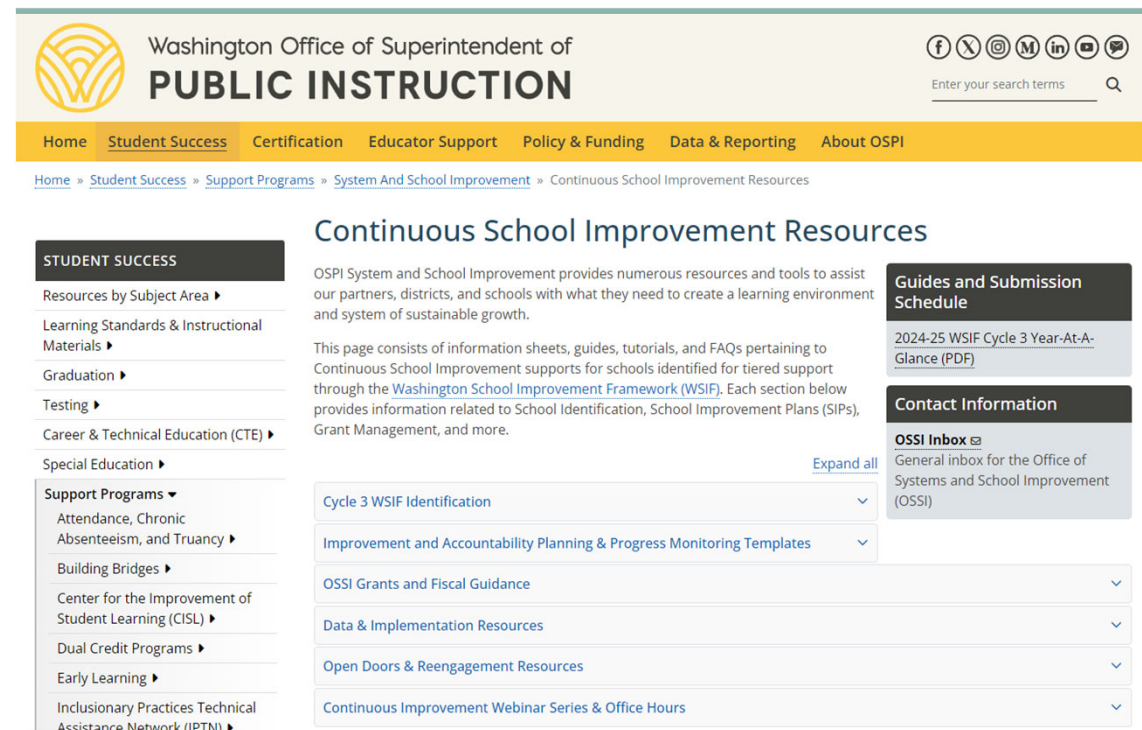


- Fixing resource gaps is about leadership and action.
- Focus on what you can control to open more doors for every student.
- Keep learning, improving, and making equity real every day.



# Continuous School Improvement Resources

- Additional Webinars
- Submission Schedule
- WSIF Cycle 3 Lists of Schools Identified for Support
- Next Steps One-Pagers
- SIP, Progress Monitoring and L-Cap Templates and Implementation Guides
- Funding and Grant Information
- School Improvement Resources



The screenshot displays the OSPI website's 'Continuous School Improvement Resources' page. The header includes the OSPI logo, the text 'Washington Office of Superintendent of PUBLIC INSTRUCTION', and social media icons. A navigation bar lists: Home, Student Success, Certification, Educator Support, Policy & Funding, Data & Reporting, and About OSPI. The breadcrumb trail reads: Home » Student Success » Support Programs » System And School Improvement » Continuous School Improvement Resources.

**STUDENT SUCCESS**

- Resources by Subject Area ▶
- Learning Standards & Instructional Materials ▶
- Graduation ▶
- Testing ▶
- Career & Technical Education (CTE) ▶
- Special Education ▶
- Support Programs ▼**
  - Attendance, Chronic Absenteeism, and Truancy ▶
  - Building Bridges ▶
  - Center for the Improvement of Student Learning (CISL) ▶
  - Dual Credit Programs ▶
  - Early Learning ▶
  - Inclusionary Practices Technical Assistance Network (IPTN) ▶

**Continuous School Improvement Resources**

OSPI System and School Improvement provides numerous resources and tools to assist our partners, districts, and schools with what they need to create a learning environment and system of sustainable growth.

This page consists of information sheets, guides, tutorials, and FAQs pertaining to Continuous School Improvement supports for schools identified for tiered support through the [Washington School Improvement Framework \(WSIF\)](#). Each section below provides information related to School Identification, School Improvement Plans (SIPs), Grant Management, and more.

[Expand all](#)

- Cycle 3 WSIF Identification ▼
- Improvement and Accountability Planning & Progress Monitoring Templates ▼
- OSPI Grants and Fiscal Guidance ▼
- Data & Implementation Resources ▼
- Open Doors & Reengagement Resources ▼
- Continuous Improvement Webinar Series & Office Hours ▼

**Guides and Submission Schedule**

- [2024-25 WSIF Cycle 3 Year-At-A-Glance \(PDF\)](#)

**Contact Information**

**OSPI Inbox**

General inbox for the Office of Systems and School Improvement (OSPI)



Washington Office of Superintendent of  
**PUBLIC INSTRUCTION**

*Connect with us!*



[k12.wa.us](http://k12.wa.us)



[facebook.com/waospi](https://facebook.com/waospi)



[instagram.com/waospi](https://instagram.com/waospi)



[twitter.com/waospi](https://twitter.com/waospi)



[medium.com/waospi](https://medium.com/waospi)



[youtube.com/waospi](https://youtube.com/waospi)



[linkedin.com/company/waospi](https://linkedin.com/company/waospi)