

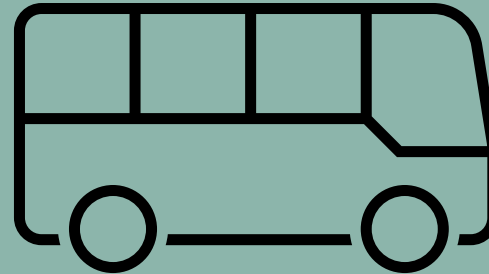
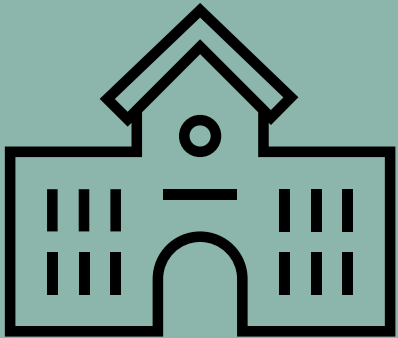
Continuous Improvement Technical Assistance Topic: Resource Inequities

January 2026



Washington Office of Superintendent of
PUBLIC INSTRUCTION

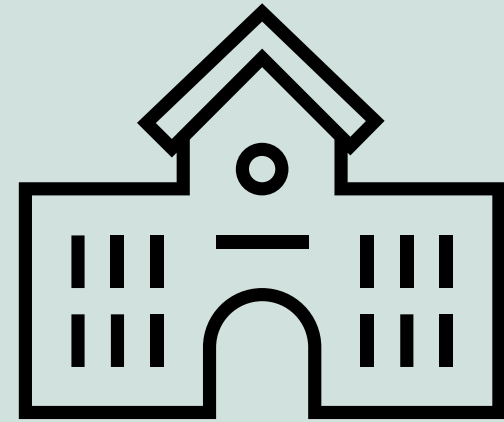
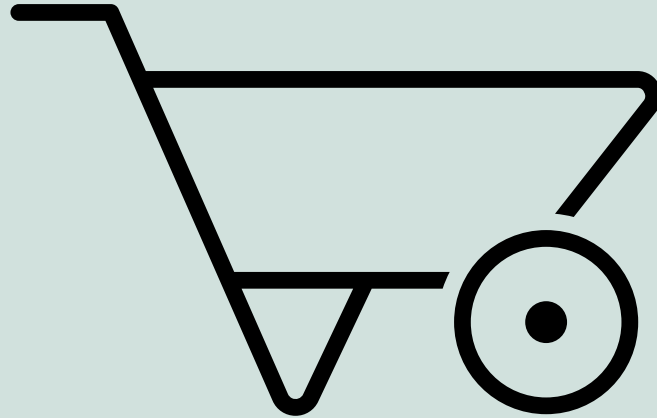
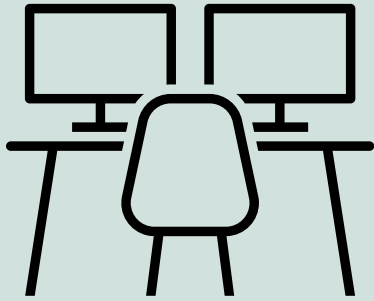
What is Resource Inequity?



How do I identify Resource Inequities?



How do I apply Identified Resource Inequities in school improvement?



Continuous School Improvement Resources

Continuous Improvement Technical Assistance Network:

- Additional Technical Assistance Topics
- Office Hours
- Funding and Grant Information
- School Improvement Resources
- And much more.

The screenshot shows the OSPI website with the following structure:

- Header:** Washington Office of Superintendent of PUBLIC INSTRUCTION. Social media icons and a search bar.
- Navigation:** Home, Student Success, Certification, Educator Support, Policy & Funding, Data & Reporting, About OSPI.
- Breadcrumbs:** Home » Student Success » Support Programs » System And School Improvement » Continuous School Improvement Resources
- Left Sidebar (STUDENT SUCCESS):**
 - Resources by Subject Area ▶
 - Learning Standards & Instructional Materials ▶
 - Graduation ▶
 - Testing ▶
 - Career & Technical Education (CTE) ▶
 - Special Education ▶
 - Support Programs ▼
 - Attendance, Chronic Absenteeism, and Truancy ▶
 - Building Bridges ▶
 - Center for the Improvement of Student Learning (CISL) ▶
 - Dual Credit Programs ▶
 - Early Learning ▶
 - Inclusionary Practices
 - Inclusionary Practices Technical Assistance Network (IPTN)
 - Learning Assistance Program (LAP) ▶
 - Multi-Tiered System of Supports (MTSS) ▶
 - Ninth Grade Success
 - Student Discipline
 - Student Transfers
 - System and School Improvement ▼
 - Whole Child Initiative ▶
- Main Content:**
 - ### Continuous School Improvement Resources

OSPI System and School Improvement provides resources and tools to assist our partners, districts, and schools with what they need to create a learning environment and system of sustainable growth. This page consists of information sheets, guides, templates, and tutorials pertaining to Continuous School Improvement supports for schools identified for tiered support (PDF) through the Washington School Improvement Framework (WSIF).

Support

 - OSSI Grants and Fiscal Guidance
 - Continuous Improvement Technical Assistance Network

Templates & Toolkits

 - Comprehensive Needs Assessment
 - LEA Consolidated Accountability Plan
 - School Improvement Plans
 - School Improvement Progress Monitoring
 - Right Sidebar:**
 - Subscribe to the monthly Continuous Improvement newsletter**
 - CI Guides & Schedules**
 - 2025-26 WSIF Cycle 3 Year-At-A-Glance (PDF)
 - Basecamp Access Request Form
 - Basecamp Tutorial
 - Continuous Improvement Glossary (PDF)
 - Contact Information**
 - OSSI Inbox**
General inbox for the Office of Systems and School Improvement (OSSI)
 - Data**
 - Common Data Sources List (PDF)
 - Data Inquiry Guide (PDF)
 - Data Portal
 - Report Card
 - Report Card Instructions (PDF)
 - Washington School Improvement Framework (WSIF)



Washington Office of Superintendent of
PUBLIC INSTRUCTION

Contact us directly: ossi@k12.wa.us



Washington Office of Superintendent of
PUBLIC INSTRUCTION

Connect with us!



k12.wa.us



facebook.com/waospi



instagram.com/waospi



twitter.com/waospi



medium.com/waospi



youtube.com/waospi



linkedin.com/company/waospi